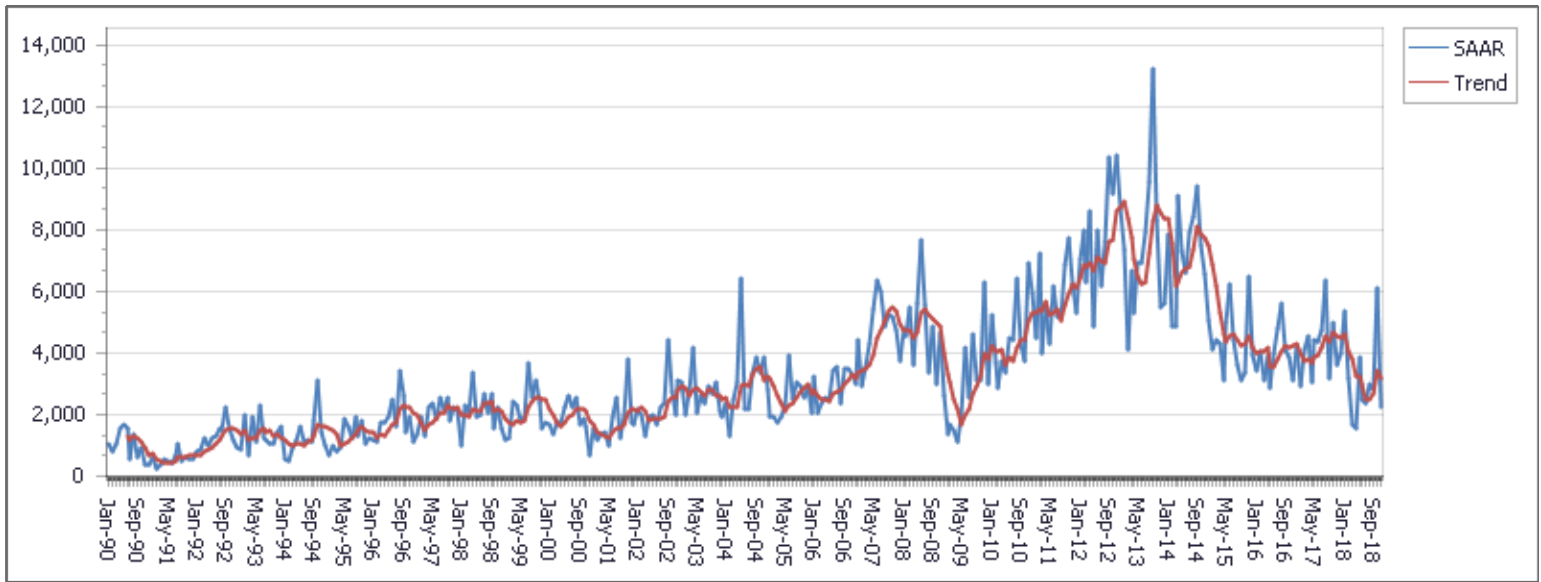


# New Housing Construction Activity — Saskatchewan



Seasonally Adjusted Total Housing Starts (All Areas)				
	Aug-18	Sep-18	Oct-18	Nov-18
<b>SAAR (All Areas)</b>	3,892	3,543	6,808	2,933
<b>Trend (All Areas)</b>	3,081	3,329	4,137	3,900

SAAR and Trend (10K+)				
	Aug-18	Sep-18	Oct-18	Nov-18
<b>SAAR</b>	3,017	2,817	6,133	2,227
<b>Trend</b>	2,499	2,691	3,455	3,179

Housing Starts by Dwelling Type (All Areas)				
	Q3-18	Q3-17	YTD-18	YTD-17
<b>Single</b>	623	850	1,319	2,096
<b>Semi-detached</b>	75	103	159	295
<b>Row</b>	83	186	264	418
<b>Apartment</b>	264	414	904	898
<b>Total</b>	1,045	1,553	2,646	3,707

Housing Starts by Dwelling Type (Centres 10K+)				
	Nov-18	Nov-17	YTD-18	YTD-17
<b>Total</b>	194	309	2,892	3,840
<b>Single</b>	114	137	1,145	1,826
<b>Semi-detached</b>	13	22	154	292
<b>Row</b>	40	59	324	512
<b>Apartment</b>	27	91	1,269	1,210

Housing Under Construction by Dwelling Type (All Areas)				
	Q4-17	Q1-18	Q2-18	Q3-18
<b>Single</b>	1,719	1,228	1,080	1,237
<b>Semi-detached</b>	224	131	99	145
<b>Row</b>	428	382	335	283
<b>Apartment</b>	1,518	1,769	1,575	1,425
<b>Total</b>	3,889	3,510	3,089	3,090

Housing Completions by Dwelling Type (Centres 10K+)				
	Nov-18	Nov-17	YTD-18	YTD-17
<b>Single</b>	124	145	1,494	1,733
<b>Semi-detached</b>	15	26	202	280
<b>Row</b>	35	77	461	545
<b>Apartment</b>	69	100	1,444	1,167
<b>Total</b>	243	348	3,601	3,725

### Housing Completions by Dwelling Type (All Areas)

	Q3-18	Q3-17	YTD-18	YTD-17
<b>Single</b>	464	811	1,593	2,364
<b>Semi-detached</b>	27	91	211	225
<b>Row</b>	135	134	408	440
<b>Apartment</b>	419	302	1,257	1,030
<b>Total</b>	1,045	1,338	3,469	4,059

### Absorbed Single-Detached (Homeowner/Condominium) Prices (50K+)

	Aug-18	Sep-18	Oct-18	Nov-18
<b>Median</b>	472,500	430,000	440,000	425,000
<b>Average</b>	542,501	491,627	493,212	481,304

Source: CMHC Starts and Completions Survey / Market Absorption Survey

Notes:

Seasonally adjusted annual rates (SAAR) are monthly figures adjusted to remove normal seasonal variation and multiplied by 12 to reflect annual levels. The trend is a six-month moving average of the monthly seasonally adjusted annual rates (SAAR). Year-to-Date (YTD) numbers are calculated using the sum of the individual months. There may be slight differences due to rounding when these are compared to quarterly or annual data in other CMHC tables or publications.

For more detailed definitions, please see refer to: <https://www03.cmhc-schl.gc.ca/hmiportal/en/TableMapChart/ScsMasMethodology>

The information contained in this document is a printable version of information originally contained on CMHC website application <https://www03.cmhc-schl.gc.ca/hmiportal/>. CMHC makes considerable effort to ensure that the information and analysis on this application is reliable, but cannot guarantee that it is accurate or complete. The content of the application is general in nature and is not intended as a substitute for professional advice when making significant financial decisions. You understand and agree that by using this document and the information it contains, you will be bound by the terms of use of the CMHC website ([http://cmhc.ca/en/imno/imno\\_003.cfm](http://cmhc.ca/en/imno/imno_003.cfm)), and in particular, you agree that you may not hold CMHC liable for any consequences that arise if you choose to rely on this information and analysis to make a financial decision.