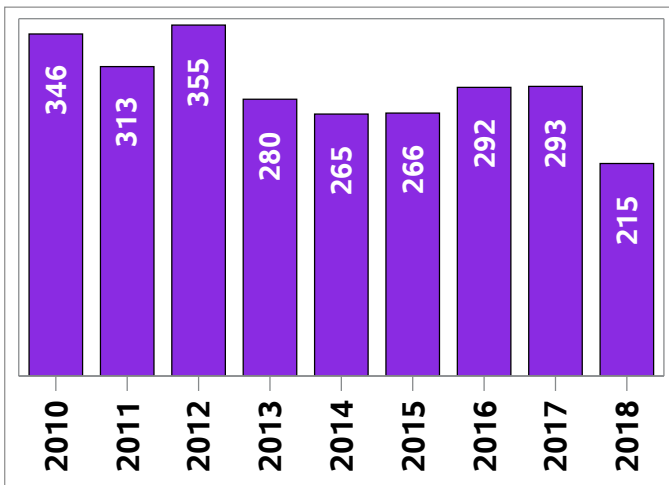
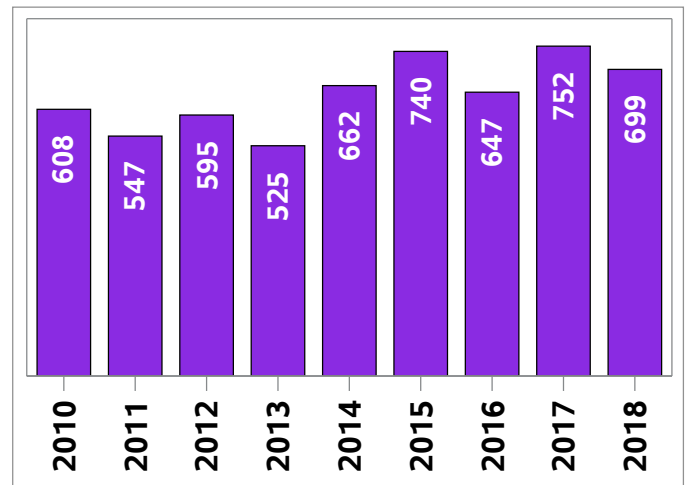


## Regina City and Region MLS® Residential Market Activity

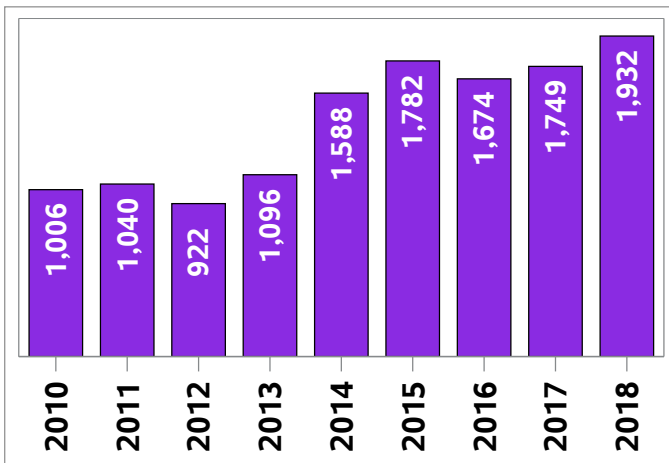
Sales Activity (March only)



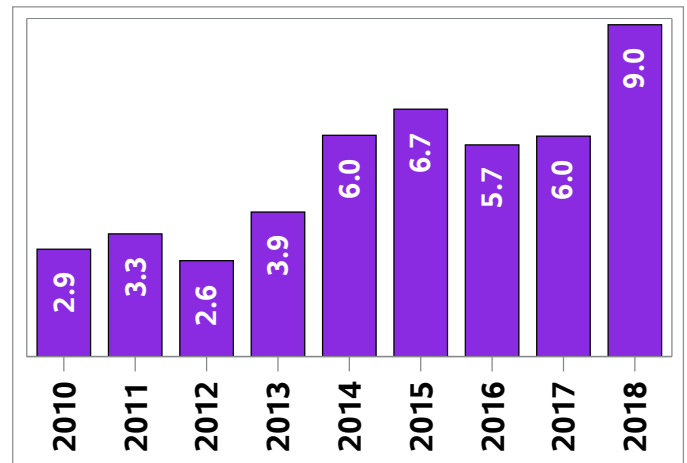
New Listings (March only)



Active Listings (March only)

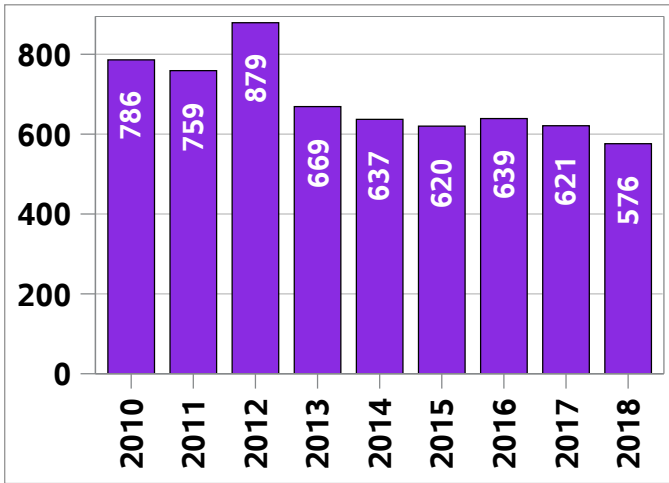


Months of Inventory (March only)

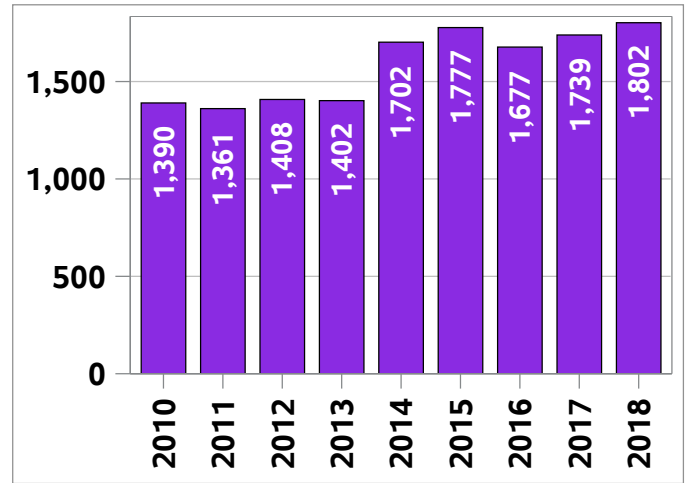


## Regina City and Region MLS® Residential Market Activity

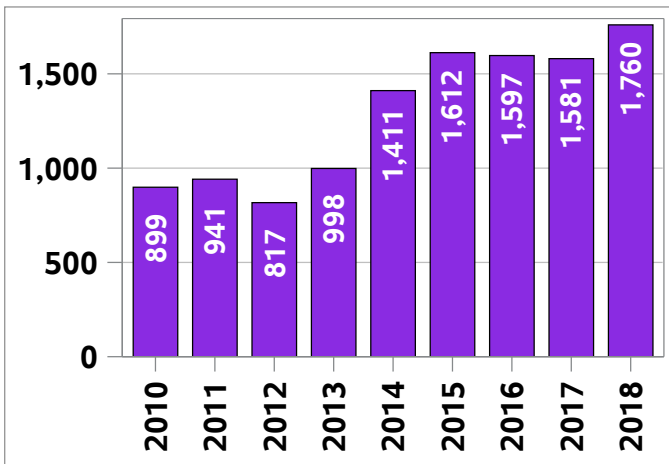
Sales Activity (March Year-to-date)



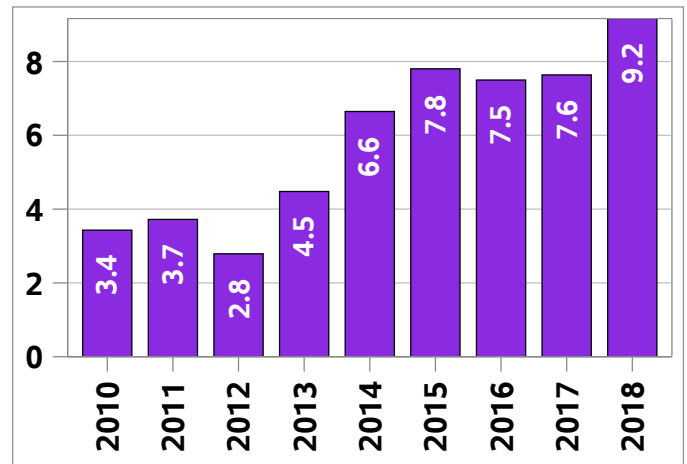
New Listings (March Year-to-date)



Active Listings <sup>1</sup> (March Year-to-date)



Months of Inventory <sup>2</sup> (March Year-to-date)



<sup>1</sup> the year-to-date active listings figure is a monthly average of the number of homes on the market at the end of each month so far this year

<sup>2</sup> Average active listings January to the current month/average of sales January to the current month

## Regina City and Region MLS® Residential Market Activity

| Actual                                   | March 2018   | Compared to <sup>6</sup> |            |            |            |            |            |
|--|--------------|--------------------------|------------|------------|------------|------------|------------|
|  |              | March 2017               | March 2016 | March 2015 | March 2013 | March 2011 | March 2008 |
| Sales Activity                           | 215          | -26.6                    | -26.4      | -19.2      | -23.2      | -31.3      | -34.5      |
| Dollar Volume (\$)                       | \$63,859,210 | -31.8                    | -30.6      | -21.1      | -28.6      | -26.5      | -16.3      |
| New Listings                             | 699          | -7.0                     | 8.0        | -5.5       | 33.1       | 27.8       | 42.9       |
| Active Listings                          | 1,932        | 10.5                     | 15.4       | 8.4        | 76.3       | 85.8       | 404.4      |
| Sales to New Listings Ratio <sup>1</sup> | 30.8         | 39.0                     | 45.1       | 35.9       | 53.3       | 57.2       | 67.1       |
| Months of Inventory <sup>2</sup>         | 9.0          | 6.0                      | 5.7        | 6.7        | 3.9        | 3.3        | 1.2        |
| Average Price (\$)                       | \$297,020    | -7.1                     | -5.8       | -2.4       | -7.0       | 7.1        | 27.7       |
| Sales to List Price Ratio <sup>3</sup>   | 95.6         | 96.3                     | 95.5       | 95.8       | 97.4       | 97.0       | 100.5      |
| Median Days on Market <sup>4</sup>       | 45.0         | 36.0                     | 37.0       | 39.5       | 27.5       | 27.0       | 5.0        |

| Year-to-date                           | March 2018   | Compared to <sup>6</sup> |            |            |            |            |            |
|--|--------------|--------------------------|------------|------------|------------|------------|------------|
|  |              | March 2017               | March 2016 | March 2015 | March 2013 | March 2011 | March 2008 |
| Sales Activity                         | 576          | -7.2                     | -9.9       | -7.1       | -13.9      | -24.1      | -35.6      |
| Dollar Volume (\$)                     | \$171,376,30 | -11.7                    | -14.7      | -9.4       | -18.4      | -17.2      | -11.8      |
| New Listings                           | 1,802        | 3.6                      | 7.5        | 1.4        | 28.5       | 32.4       | 61.3       |
| Active Listings <sup>3</sup>           | 1,760        | 11.3                     | 10.2       | 9.1        | 76.3       | 86.9       | 508.2      |
| Months of Inventory <sup>5</sup>       | 9.2          | 7.6                      | 7.5        | 7.8        | 4.5        | 3.7        | 1.0        |
| Average Price (\$)                     | \$297,528    | -4.8                     | -5.4       | -2.5       | -5.3       | 9.1        | 36.9       |
| Sales to List Price Ratio <sup>6</sup> | 95.0         | 95.9                     | 95.4       | 95.5       | 97.0       | 96.8       | 100.2      |
| Median Days on Market <sup>7</sup>     | 47.0         | 41.0                     | 43.0       | 43.5       | 31.0       | 29.0       | 5.0        |

<sup>1</sup> Sales / new listings \* 100; Compared to Levels from previous periods

<sup>2</sup> Active listings at month end / monthly sales; Compared to levels from previous periods

<sup>3</sup> The year-to-date active listings figure is a monthly average of the number of homes on the market at the end of each month so far this year

<sup>4</sup> Sum of sales from January to current month / sum of new listings from January to current month

<sup>5</sup> Average active listings from January to current month / average sales from January to current month

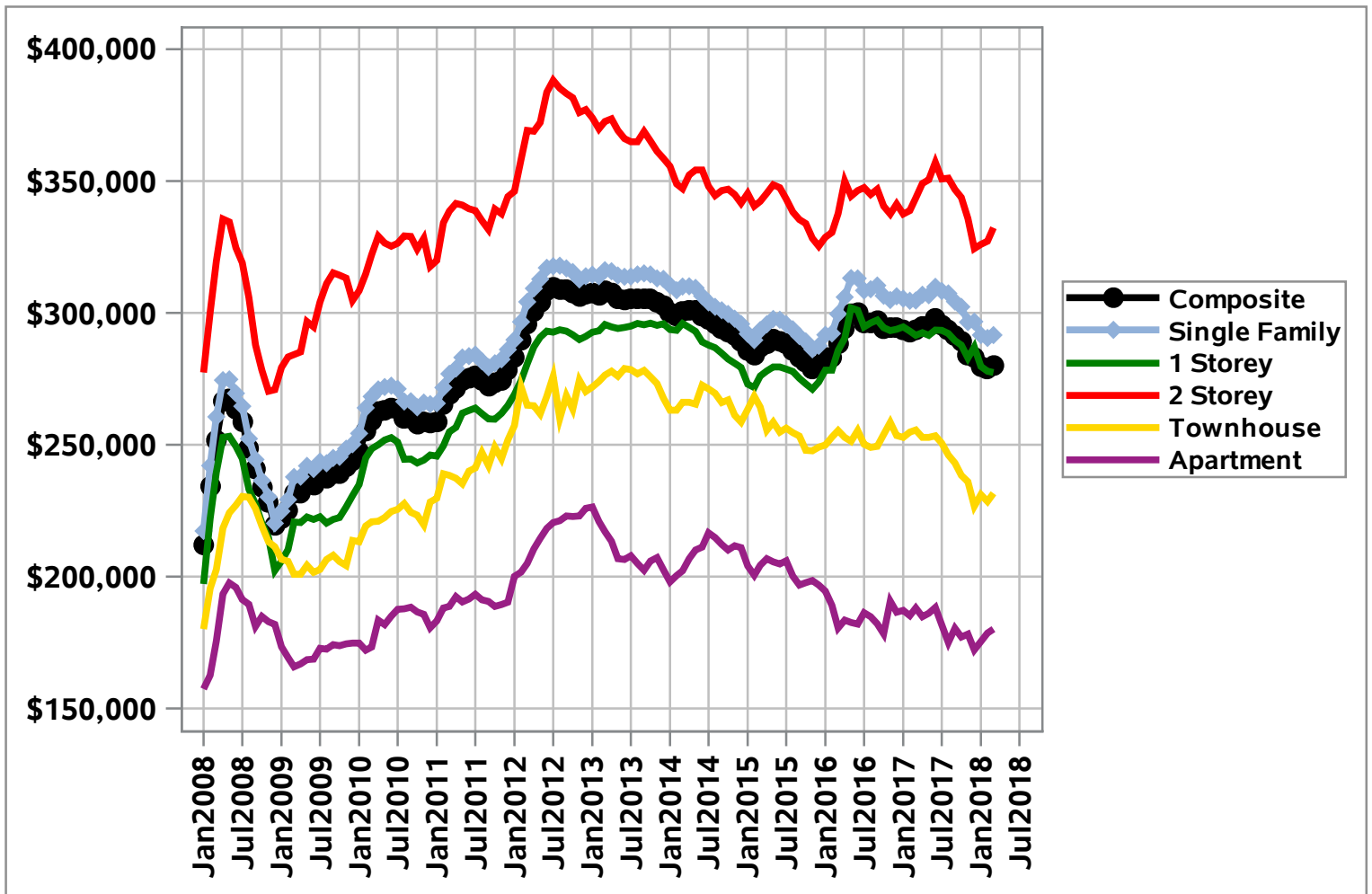
<sup>6</sup> Sales to new listings ratio and months of inventory shown as levels; all others calculated as percentage changes

## Regina City and Region MLS® HPI Benchmark Price

### MLS® Home Price Index Benchmark Price

| Benchmark Type: | March 2018 | percentage change vs. |              |              |               |             |             |
|-----------------|------------|-----------------------|--------------|--------------|---------------|-------------|-------------|
|                 |            | 1 month ago           | 3 months ago | 6 months ago | 12 months ago | 3 years ago | 5 years ago |
| Composite       | \$280,000  | 0.5                   | -1.0         | -3.9         | -4.6          | -2.4        | -9.1        |
| Single Family   | \$291,600  | 0.4                   | -1.7         | -4.2         | -4.3          | -0.6        | -7.8        |
| One Storey      | \$277,400  | -0.2                  | -3.4         | -4.2         | -4.8          | 0.5         | -6.2        |
| Two Storey      | \$332,300  | 1.6                   | 2.4          | -4.2         | -3.3          | -2.9        | -10.8       |
| Townhouse       | \$231,600  | 1.4                   | 2.2          | -4.7         | -9.4          | -12.4       | -16.2       |
| Apartment       | \$180,100  | 0.8                   | 4.6          | -0.2         | -4.3          | -11.8       | -17.0       |

### MLS® HPI Benchmark Price



## Regina City and Region MLS® HPI Benchmark Descriptions

### Composite

| Features                                     | Value                     |
|--|---------------------------|
| Above Ground Bedrooms                        | 3                         |
| Basement Finish                              | Unfinished                |
| Bedrooms                                     | 3                         |
| Below Ground Bedrooms                        | 0                         |
| Exterior Walls                               | Masonry & Siding          |
| Freshwater Supply                            | Municipal waterworks      |
| Full Bathrooms                               | 2                         |
| Garage Description                           | Attached, Single width    |
| Gross Living Area (Above Ground; in sq. ft.) | 1108                      |
| Half Bathrooms                               | 0                         |
| Heating                                      | Forced air                |
| Heating Fuel                                 | Natural Gas               |
| Number of Fireplaces                         | 0                         |
| Total Number Of Rooms                        | 7                         |
| Type Of Foundation                           | Basement, Poured concrete |
| Wastewater Disposal                          | Municipal sewers          |
| Year Built                                   | 1971                      |

### Single Family

| Features                                     | Value                     |
|--|---------------------------|
| Above Ground Bedrooms                        | 3                         |
| Basement Finish                              | Unfinished                |
| Bedrooms                                     | 3                         |
| Below Ground Bedrooms                        | 0                         |
| Exterior Walls                               | Masonry & Siding          |
| Freshwater Supply                            | Municipal waterworks      |
| Full Bathrooms                               | 2                         |
| Garage Description                           | Attached, Single width    |
| Gross Living Area (Above Ground; in sq. ft.) | 1134                      |
| Half Bathrooms                               | 0                         |
| Heating                                      | Forced air                |
| Heating Fuel                                 | Natural Gas               |
| Lot Size                                     | 5750                      |
| Number of Fireplaces                         | 0                         |
| Total Number Of Rooms                        | 7                         |
| Type Of Foundation                           | Basement, Poured concrete |
| Type of Property                             | Detached                  |
| Wastewater Disposal                          | Municipal sewers          |
| Year Built                                   | 1965                      |

## Regina City and Region MLS® HPI Benchmark Descriptions

### 1 Storey 🏠

| Features                                     | Value                     |
|--|---------------------------|
| Above Ground Bedrooms                        | 3                         |
| Basement Finish                              | Unfinished                |
| Bedrooms                                     | 4                         |
| Below Ground Bedrooms                        | 1                         |
| Exterior Walls                               | Masonry & Siding          |
| Freshwater Supply                            | Municipal waterworks      |
| Full Bathrooms                               | 2                         |
| Garage Description                           | Attached, Single width    |
| Gross Living Area (Above Ground; in sq. ft.) | 1060                      |
| Half Bathrooms                               | 0                         |
| Heating                                      | Forced air                |
| Heating Fuel                                 | Natural Gas               |
| Lot Size                                     | 5792                      |
| Number of Fireplaces                         | 0                         |
| Total Number Of Rooms                        | 7                         |
| Type Of Foundation                           | Basement, Poured concrete |
| Type of Property                             | Detached                  |
| Wastewater Disposal                          | Municipal sewers          |
| Year Built                                   | 1965                      |

### 2 Storey 🏠

| Features                                     | Value                     |
|--|---------------------------|
| Above Ground Bedrooms                        | 3                         |
| Basement Finish                              | Unfinished                |
| Bedrooms                                     | 3                         |
| Below Ground Bedrooms                        | 0                         |
| Exterior Walls                               | Masonry & Siding          |
| Freshwater Supply                            | Municipal waterworks      |
| Full Bathrooms                               | 2                         |
| Garage Description                           | Attached, Double width    |
| Gross Living Area (Above Ground; in sq. ft.) | 1453                      |
| Half Bathrooms                               | 1                         |
| Heating                                      | Forced air                |
| Heating Fuel                                 | Natural Gas               |
| Lot Size                                     | 5598                      |
| Number of Fireplaces                         | 0                         |
| Total Number Of Rooms                        | 7                         |
| Type Of Foundation                           | Basement, Poured concrete |
| Type of Property                             | Detached                  |
| Wastewater Disposal                          | Municipal sewers          |
| Year Built                                   | 1972                      |

## Regina City and Region MLS® HPI Benchmark Descriptions

### Townhouse

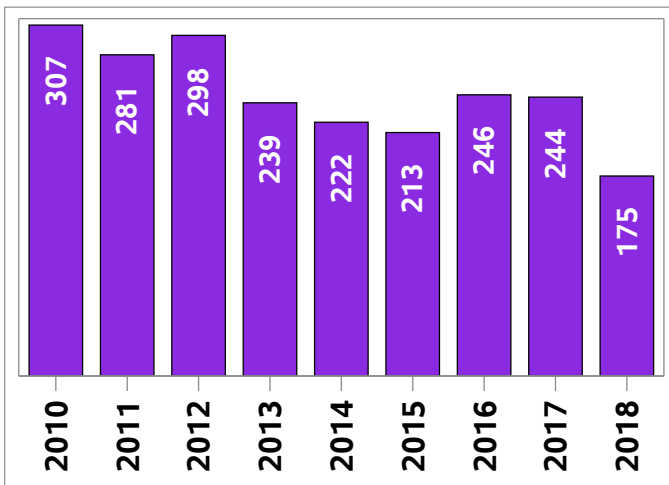
| Features                                     | Value                     |
|--|---------------------------|
| Above Ground Bedrooms                        | 2                         |
| Attached Specification                       | Row                       |
| Basement Finish                              | Unfinished                |
| Bedrooms                                     | 2                         |
| Below Ground Bedrooms                        | 0                         |
| Exterior Walls                               | Masonry & Siding          |
| Freshwater Supply                            | Municipal waterworks      |
| Full Bathrooms                               | 1                         |
| Garage Description                           | Attached, Single width    |
| Gross Living Area (Above Ground; in sq. ft.) | 1060                      |
| Half Bathrooms                               | 1                         |
| Heating                                      | Forced air                |
| Heating Fuel                                 | Natural Gas               |
| Number of Fireplaces                         | 0                         |
| Total Number Of Rooms                        | 6                         |
| Type Of Foundation                           | Basement, Poured concrete |
| Wastewater Disposal                          | Municipal sewers          |
| Year Built                                   | 2000                      |

### Apartment

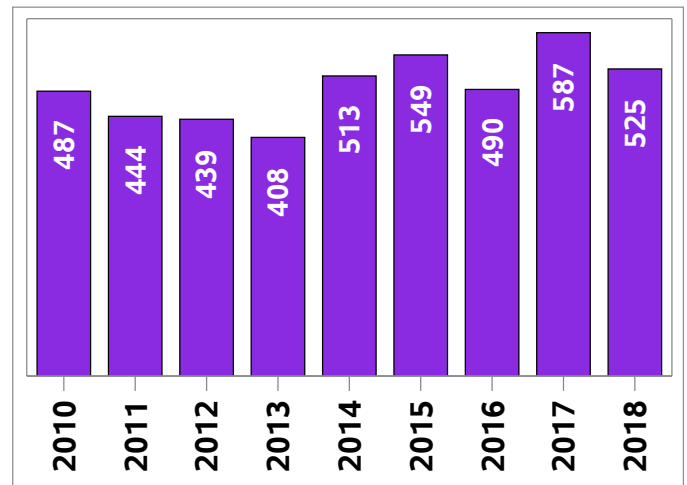
| Features                                     | Value                |
|--|----------------------|
| Above Ground Bedrooms                        | 2                    |
| Attached Specification                       | Row                  |
| Basement Finish                              | Unfinished           |
| Bedrooms                                     | 2                    |
| Below Ground Bedrooms                        | 0                    |
| Exterior Walls                               | Masonry & Siding     |
| Freshwater Supply                            | Municipal waterworks |
| Full Bathrooms                               | 1                    |
| Gross Living Area (Above Ground; in sq. ft.) | 932                  |
| Half Bathrooms                               | 0                    |
| Heating                                      | Hot water            |
| Heating Fuel                                 | Natural Gas          |
| Number of Fireplaces                         | 0                    |
| Total Number Of Rooms                        | 5                    |
| Type Of Foundation                           | Poured concrete      |
| Wastewater Disposal                          | Municipal sewers     |
| Year Built                                   | 1983                 |

# City of Regina MLS® Residential Market Activity

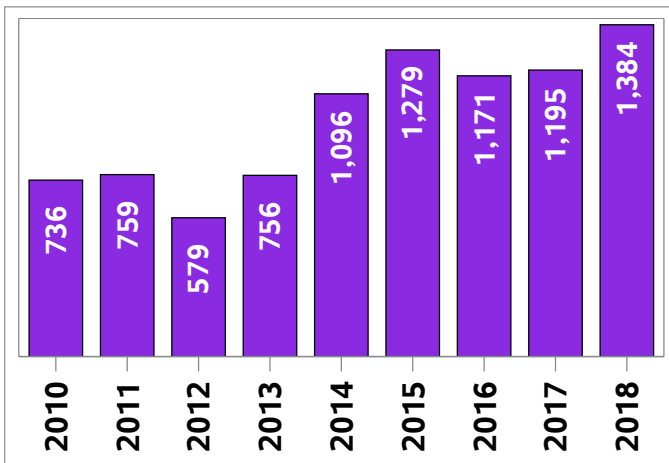
Sales Activity (March only)



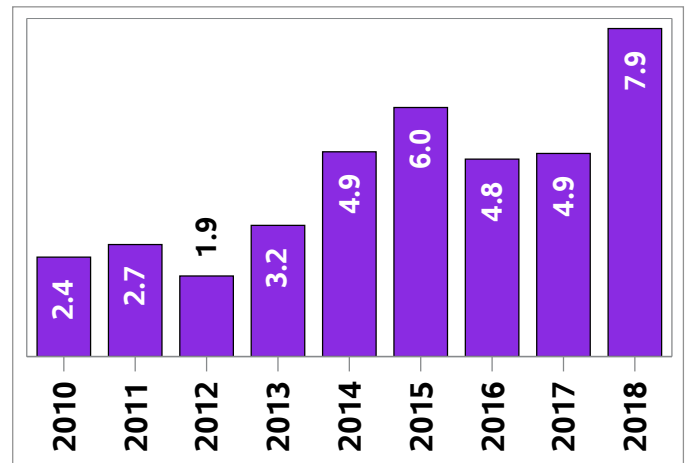
New Listings (March only)



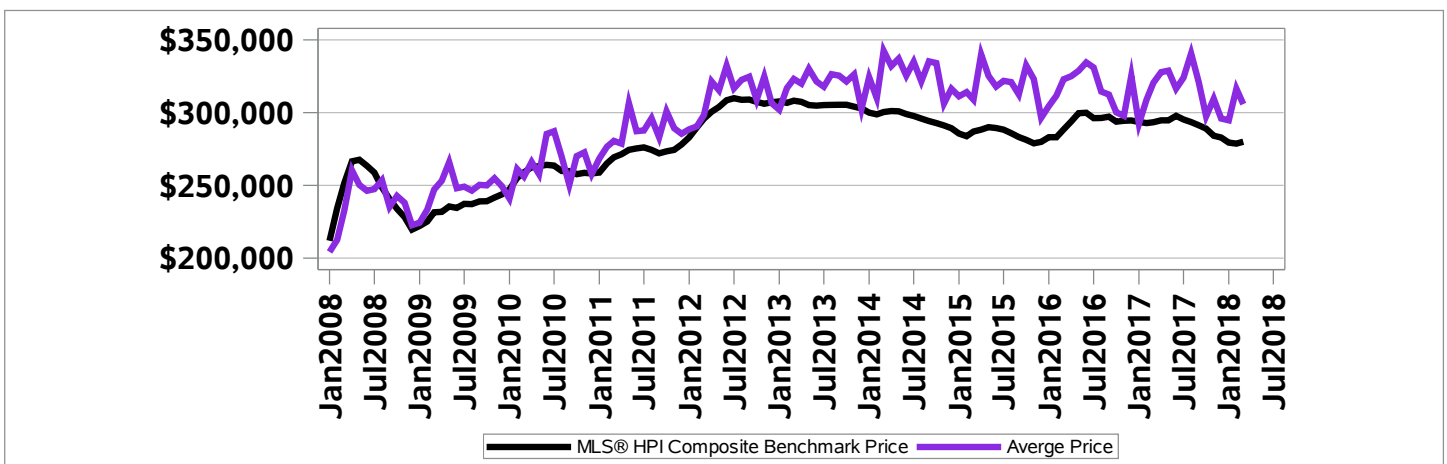
Active Listings (March only)



Months of Inventory (March only)



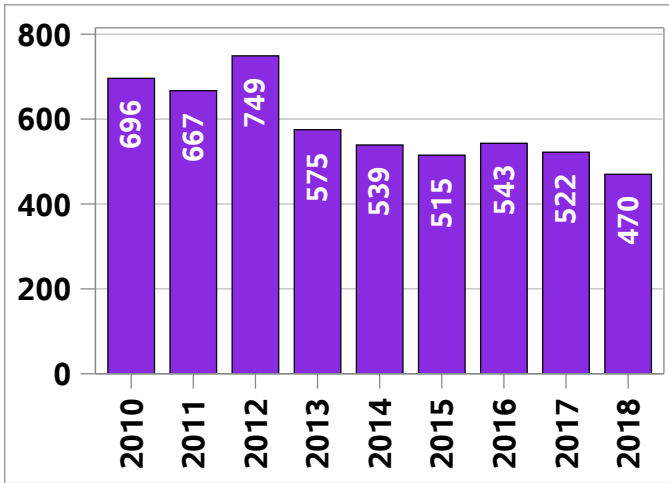
MLS® HPI Benchmark Price and Average Price



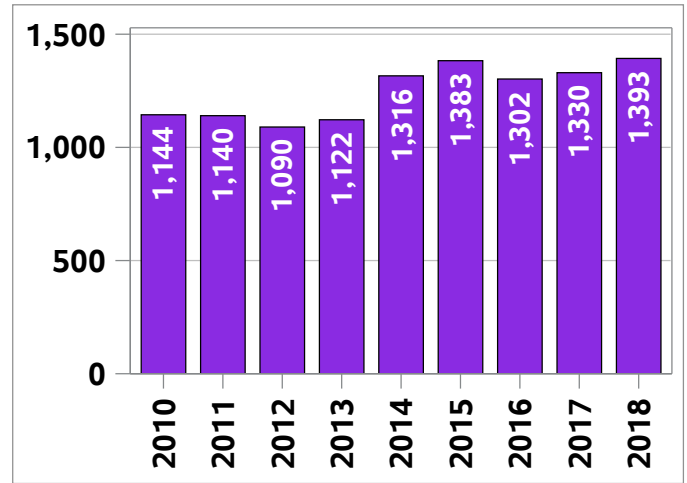


# City of Regina MLS® Residential Market Activity

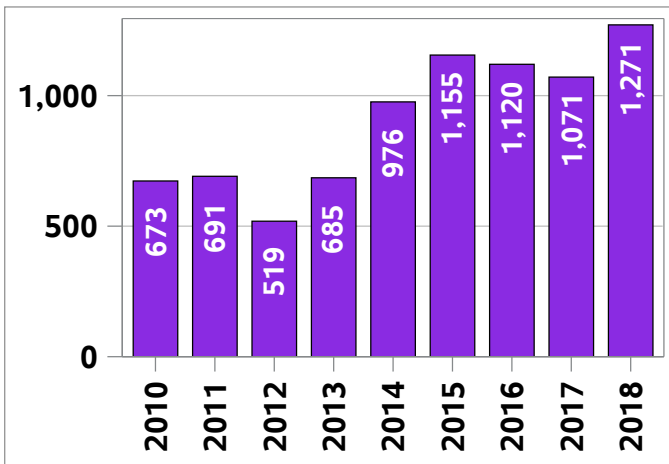
Sales Activity (March Year-to-date)



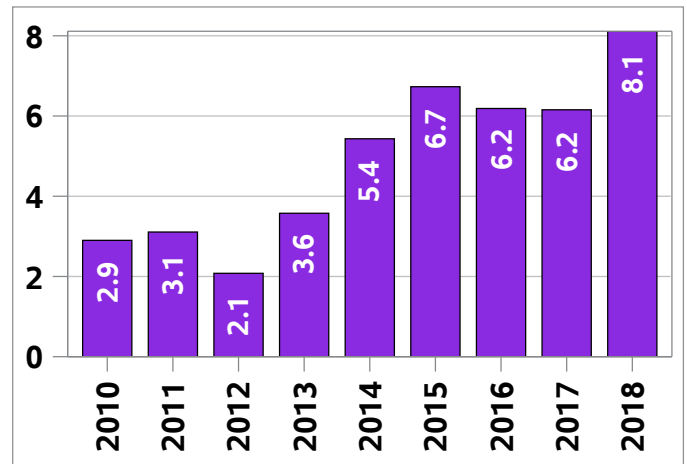
New Listings (March Year-to-date)



Active Listings <sup>1</sup> (March Year-to-date)



Months of Inventory <sup>2</sup> (March Year-to-date)



<sup>1</sup> the year-to-date active listings figure is a monthly average of the number of homes on the market at the end of each month so far this year

<sup>2</sup> Average active listings January to the current month/average of sales January to the current month

## City of Regina MLS® Residential Market Activity

| Actual                                   | March 2018   | Compared to <sup>6</sup> |            |            |            |            |            |
|--|--------------|--------------------------|------------|------------|------------|------------|------------|
|  |              | March 2017               | March 2016 | March 2015 | March 2013 | March 2011 | March 2008 |
| Sales Activity                           | 175          | -28.3                    | -28.9      | -17.8      | -26.8      | -37.7      | -46.5      |
| Dollar Volume (\$)                       | \$53,522,810 | -31.6                    | -32.6      | -18.7      | -30.7      | -32.1      | -29.7      |
| New Listings                             | 525          | -10.6                    | 7.1        | -4.4       | 28.7       | 18.2       | 7.6        |
| Active Listings                          | 1,384        | 15.8                     | 18.2       | 8.2        | 83.1       | 82.3       | 264.2      |
| Sales to New Listings Ratio <sup>1</sup> | 33.3         | 41.6                     | 50.2       | 38.8       | 58.6       | 63.3       | 67.0       |
| Months of Inventory <sup>2</sup>         | 7.9          | 4.9                      | 4.8        | 6.0        | 3.2        | 2.7        | 1.2        |
| Average Price (\$)                       | \$305,845    | -4.6                     | -5.3       | -1.0       | -5.4       | 9.0        | 31.4       |
| Sales to List Price Ratio <sup>3</sup>   | 96.0         | 96.6                     | 96.3       | 96.5       | 97.7       | 97.2       | 100.6      |
| Median Days on Market <sup>4</sup>       | 45.0         | 35.0                     | 34.5       | 35.0       | 25.0       | 25.0       | 5.0        |

| Year-to-date                           | March 2018   | Compared to <sup>6</sup> |            |            |            |            |            |
|--|--------------|--------------------------|------------|------------|------------|------------|------------|
|  |              | March 2017               | March 2016 | March 2015 | March 2013 | March 2011 | March 2008 |
| Sales Activity                         | 470          | -10.0                    | -13.4      | -8.7       | -18.3      | -29.5      | -47.4      |
| Dollar Volume (\$)                     | \$143,763,03 | -11.1                    | -16.0      | -10.3      | -20.7      | -21.9      | -25.9      |
| New Listings                           | 1,393        | 4.7                      | 7.0        | 0.7        | 24.2       | 22.2       | 25.0       |
| Active Listings <sup>3</sup>           | 1,271        | 18.7                     | 13.5       | 10.0       | 85.5       | 83.9       | 342.9      |
| Months of Inventory <sup>5</sup>       | 8.1          | 6.2                      | 6.2        | 6.7        | 3.6        | 3.1        | 1.0        |
| Average Price (\$)                     | \$305,879    | -1.3                     | -2.9       | -1.7       | -3.0       | 10.8       | 40.7       |
| Sales to List Price Ratio <sup>6</sup> | 95.6         | 96.1                     | 95.9       | 96.0       | 97.4       | 96.8       | 100.2      |
| Median Days on Market <sup>7</sup>     | 45.0         | 36.5                     | 40.0       | 40.0       | 28.0       | 27.0       | 5.0        |

<sup>1</sup> Sales / new listings \* 100; Compared to Levels from previous periods

<sup>2</sup> Active listings at month end / monthly sales; Compared to levels from previous periods

<sup>3</sup> The year-to-date active listings figure is a monthly average of the number of homes on the market at the end of each month so far this year

<sup>4</sup> Sum of sales from January to current month / sum of new listings from January to current month

<sup>5</sup> Average active listings from January to current month / average sales from January to current month

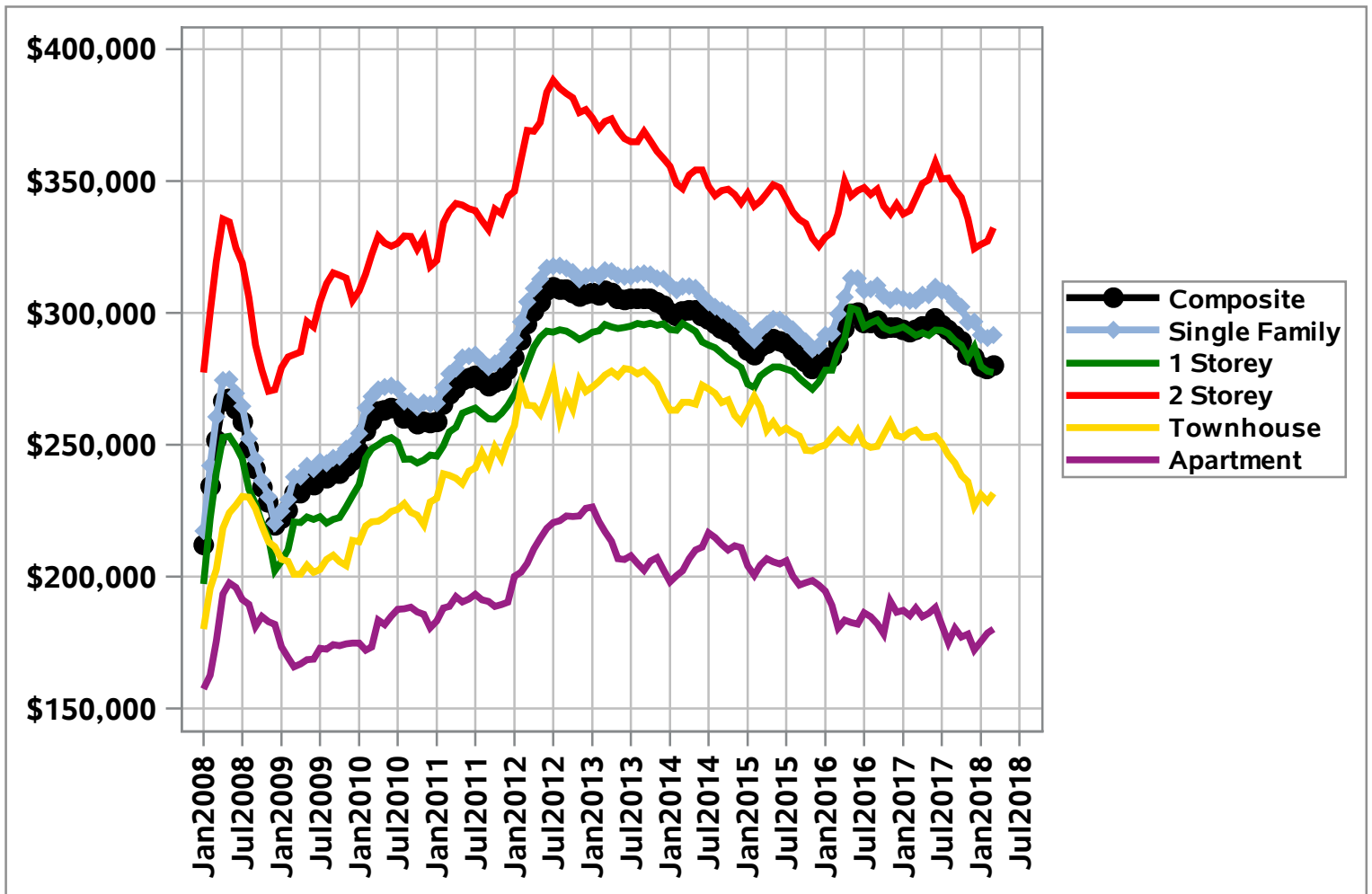
<sup>6</sup> Sales to new listings ratio and months of inventory shown as levels; all others calculated as percentage changes

## City of Regina MLS® HPI Benchmark Price

### MLS® Home Price Index Benchmark Price

| Benchmark Type: | March 2018 | percentage change vs. |              |              |               |             |             |
|-----------------|------------|-----------------------|--------------|--------------|---------------|-------------|-------------|
|                 |            | 1 month ago           | 3 months ago | 6 months ago | 12 months ago | 3 years ago | 5 years ago |
| Composite       | \$280,000  | 0.5                   | -1.0         | -3.9         | -4.6          | -2.4        | -9.1        |
| Single Family   | \$291,600  | 0.4                   | -1.7         | -4.2         | -4.3          | -0.6        | -7.8        |
| One Storey      | \$277,400  | -0.2                  | -3.4         | -4.2         | -4.8          | 0.5         | -6.2        |
| Two Storey      | \$332,300  | 1.6                   | 2.4          | -4.2         | -3.3          | -2.9        | -10.8       |
| Townhouse       | \$231,600  | 1.4                   | 2.2          | -4.7         | -9.4          | -12.4       | -16.2       |
| Apartment       | \$180,100  | 0.8                   | 4.6          | -0.2         | -4.3          | -11.8       | -17.0       |

### MLS® HPI Benchmark Price



## City of Regina MLS® HPI Benchmark Descriptions

### Composite

| Features                                     | Value                     |
|--|---------------------------|
| Above Ground Bedrooms                        | 3                         |
| Basement Finish                              | Unfinished                |
| Bedrooms                                     | 3                         |
| Below Ground Bedrooms                        | 0                         |
| Exterior Walls                               | Masonry & Siding          |
| Freshwater Supply                            | Municipal waterworks      |
| Full Bathrooms                               | 2                         |
| Garage Description                           | Attached, Single width    |
| Gross Living Area (Above Ground; in sq. ft.) | 1108                      |
| Half Bathrooms                               | 0                         |
| Heating                                      | Forced air                |
| Heating Fuel                                 | Natural Gas               |
| Number of Fireplaces                         | 0                         |
| Total Number Of Rooms                        | 7                         |
| Type Of Foundation                           | Basement, Poured concrete |
| Wastewater Disposal                          | Municipal sewers          |
| Year Built                                   | 1971                      |

### Single Family

| Features                                     | Value                     |
|--|---------------------------|
| Above Ground Bedrooms                        | 3                         |
| Basement Finish                              | Unfinished                |
| Bedrooms                                     | 3                         |
| Below Ground Bedrooms                        | 0                         |
| Exterior Walls                               | Masonry & Siding          |
| Freshwater Supply                            | Municipal waterworks      |
| Full Bathrooms                               | 2                         |
| Garage Description                           | Attached, Single width    |
| Gross Living Area (Above Ground; in sq. ft.) | 1134                      |
| Half Bathrooms                               | 0                         |
| Heating                                      | Forced air                |
| Heating Fuel                                 | Natural Gas               |
| Lot Size                                     | 5750                      |
| Number of Fireplaces                         | 0                         |
| Total Number Of Rooms                        | 7                         |
| Type Of Foundation                           | Basement, Poured concrete |
| Type of Property                             | Detached                  |
| Wastewater Disposal                          | Municipal sewers          |
| Year Built                                   | 1965                      |

## City of Regina MLS® HPI Benchmark Descriptions

### 1 Storey 🏠

| Features                                     | Value                     |
|--|---------------------------|
| Above Ground Bedrooms                        | 3                         |
| Basement Finish                              | Unfinished                |
| Bedrooms                                     | 4                         |
| Below Ground Bedrooms                        | 1                         |
| Exterior Walls                               | Masonry & Siding          |
| Freshwater Supply                            | Municipal waterworks      |
| Full Bathrooms                               | 2                         |
| Garage Description                           | Attached, Single width    |
| Gross Living Area (Above Ground; in sq. ft.) | 1060                      |
| Half Bathrooms                               | 0                         |
| Heating                                      | Forced air                |
| Heating Fuel                                 | Natural Gas               |
| Lot Size                                     | 5792                      |
| Number of Fireplaces                         | 0                         |
| Total Number Of Rooms                        | 7                         |
| Type Of Foundation                           | Basement, Poured concrete |
| Type of Property                             | Detached                  |
| Wastewater Disposal                          | Municipal sewers          |
| Year Built                                   | 1965                      |

### 2 Storey 🏠

| Features                                     | Value                     |
|--|---------------------------|
| Above Ground Bedrooms                        | 3                         |
| Basement Finish                              | Unfinished                |
| Bedrooms                                     | 3                         |
| Below Ground Bedrooms                        | 0                         |
| Exterior Walls                               | Masonry & Siding          |
| Freshwater Supply                            | Municipal waterworks      |
| Full Bathrooms                               | 2                         |
| Garage Description                           | Attached, Double width    |
| Gross Living Area (Above Ground; in sq. ft.) | 1453                      |
| Half Bathrooms                               | 1                         |
| Heating                                      | Forced air                |
| Heating Fuel                                 | Natural Gas               |
| Lot Size                                     | 5598                      |
| Number of Fireplaces                         | 0                         |
| Total Number Of Rooms                        | 7                         |
| Type Of Foundation                           | Basement, Poured concrete |
| Type of Property                             | Detached                  |
| Wastewater Disposal                          | Municipal sewers          |
| Year Built                                   | 1972                      |

## City of Regina MLS® HPI Benchmark Descriptions

### Townhouse

| Features                                     | Value                     |
|--|---------------------------|
| Above Ground Bedrooms                        | 2                         |
| Attached Specification                       | Row                       |
| Basement Finish                              | Unfinished                |
| Bedrooms                                     | 2                         |
| Below Ground Bedrooms                        | 0                         |
| Exterior Walls                               | Masonry & Siding          |
| Freshwater Supply                            | Municipal waterworks      |
| Full Bathrooms                               | 1                         |
| Garage Description                           | Attached, Single width    |
| Gross Living Area (Above Ground; in sq. ft.) | 1060                      |
| Half Bathrooms                               | 1                         |
| Heating                                      | Forced air                |
| Heating Fuel                                 | Natural Gas               |
| Number of Fireplaces                         | 0                         |
| Total Number Of Rooms                        | 6                         |
| Type Of Foundation                           | Basement, Poured concrete |
| Wastewater Disposal                          | Municipal sewers          |
| Year Built                                   | 2000                      |

### Apartment

| Features                                     | Value                |
|--|----------------------|
| Above Ground Bedrooms                        | 2                    |
| Attached Specification                       | Row                  |
| Basement Finish                              | Unfinished           |
| Bedrooms                                     | 2                    |
| Below Ground Bedrooms                        | 0                    |
| Exterior Walls                               | Masonry & Siding     |
| Freshwater Supply                            | Municipal waterworks |
| Full Bathrooms                               | 1                    |
| Gross Living Area (Above Ground; in sq. ft.) | 932                  |
| Half Bathrooms                               | 0                    |
| Heating                                      | Hot water            |
| Heating Fuel                                 | Natural Gas          |
| Number of Fireplaces                         | 0                    |
| Total Number Of Rooms                        | 5                    |
| Type Of Foundation                           | Poured concrete      |
| Wastewater Disposal                          | Municipal sewers     |
| Year Built                                   | 1983                 |